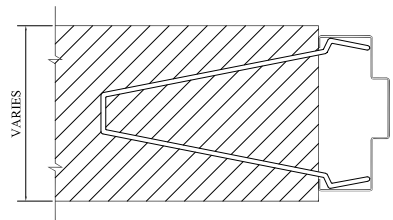
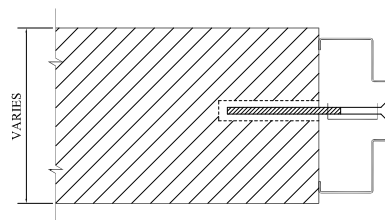


WIRE MASONRY (A)



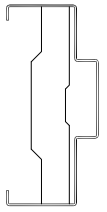
WIRE MASONRY (B)



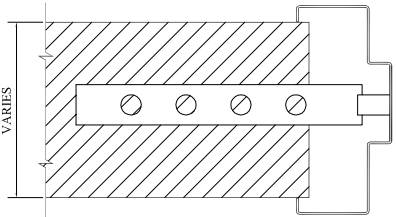
PREPARED MASONRY (WELDED-ON) (C)

3/8" 20 FHMS AND
3/8" EXPANSION SHIELD

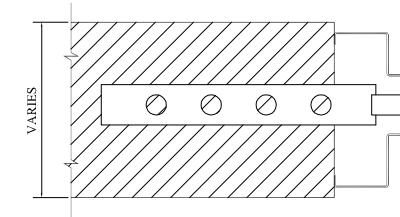
SNAP-IN PO ANCHOR
(REQUIRES 3/4"Ø HOLE IN SOFFIT)



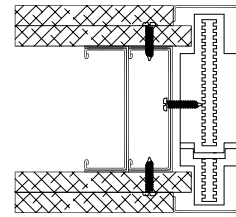
(D)



(WELDED-ON) (E)

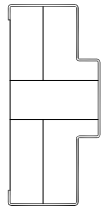


(WELDED-ON) (F)

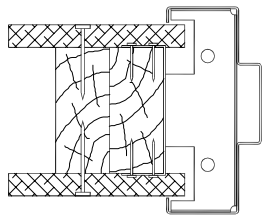


CLOSED CHANNEL STEEL STUD (G)

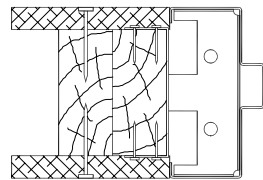
TWIST-IN PO ANCHOR (H)



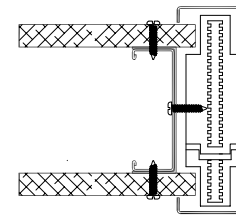
(H)



WOOD STUD (J)

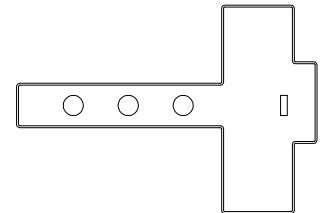


WOOD STUD (K)

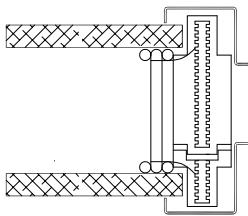


CLOSED CHANNEL STEEL STUD (L)

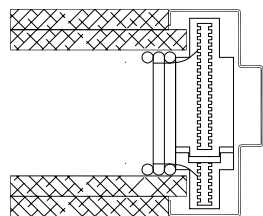
TEE MASONRY ANCHOR (M)



(M)

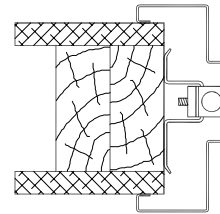


WIRE STUD (N)

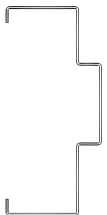


WIRED STUD (O)

ADJUSTABLE DRYWALL PRESSURE ANCHOR (WELDED-ON) (P)



NOTE: ALL ANCHORS SHIPPED LOOSE EXCEPT AS NOTED



(Q)