

EMBOSSSED DOORS**TECHNICAL DATA
SHEET No. 104**

Embossed Doors shall be as manufactured or furnished by Republic Doors and Frames, McKenzie, Tennessee 38201. (Standard components are bold.)

Thickness - 1-3/4" or 1-3/8" (1-3/8" available in 6-Panel, 20 & 18 gage only)

Actual Door Size - Door undersized from nominal by 1/4" in width and 7/8" in height. Standard undercut is 3/4".

Hinge Rail & Reinforcement - Hinge edge is non-beveled and reinforced with a continuous or segmented 16 gage steel channel projection welded at a maximum 5" on center. Additional reinforcement plates are provided at the hinge locations to give a total of 3/16" reinforcement. (Backset 1/4")

Lock Rail - Lock edge is non-beveled and reinforced with a continuous 16 gage channel. 16 gage reinforcements for mortise or cylindrical locks are of an integral type in accordance with ANSI A115 Standards. (Optional - Beveled lock edge - 1/8" in 2")

Edge Seams - Overlapping.

Top Channel - Flush, 16 gage channel, projection welded at a maximum 2-1/2" on center.

Bottom Channel - Inverted 16 gage channel, projection welded at a maximum 2-1/2" on center.

Cores Available - Polystyrene Core - Doors shall be reinforced by laminating face skins to a foam core slab of expanded polystyrene. Core shall have 1 lb to 1.25 lb per cubic foot density.

Insulation - Polystyrene Core (R value of 2.18 per ASTM C1363)
(Optional- Sound Transmission Control (STC) 40- 6-panel only)

Face Skins - 20, 18 or 16 gage - Faces shall be deep drawn embossed raised panels, both inside and out. (Optional - Wood grain embossed (20 and 18 gage only, 3070 max) on 6-panel doors - prime paint only) (16 gage only available in 6 and 4-panel design)

Closer Reinforcement (Option) - 14 gage standard / 12 gage optional. (18" x 6")

Size Availability - Minimum 2'6" x 6'8", Maximum 3'6" x 8'0" (maximum 20 gage = 3'0" x 7'0")
(Optional - 3'0" x 8'0", 6-panel design with elongated panel embossments)

Note: 2'6" wide embossed panel doors will have special lock height - not ADA compliant.

SDI 100 Level/Model - Level 1 Models 1 (Standard Duty, minimum 20 gage, hollow steel composite)
Level 2 Model 1 or 2 (Heavy Duty, minimum 18 gage, hollow steel composite)
Level 3 Models 1 or 2 (Extra Heavy duty minimum 16 gage, hollow steel composite)

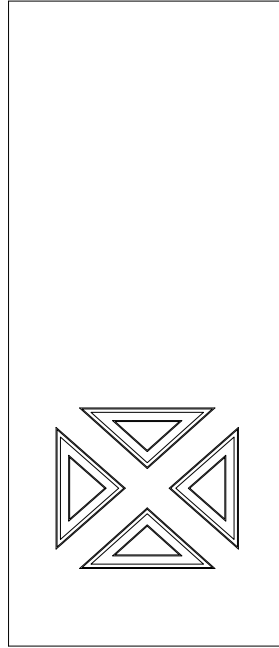
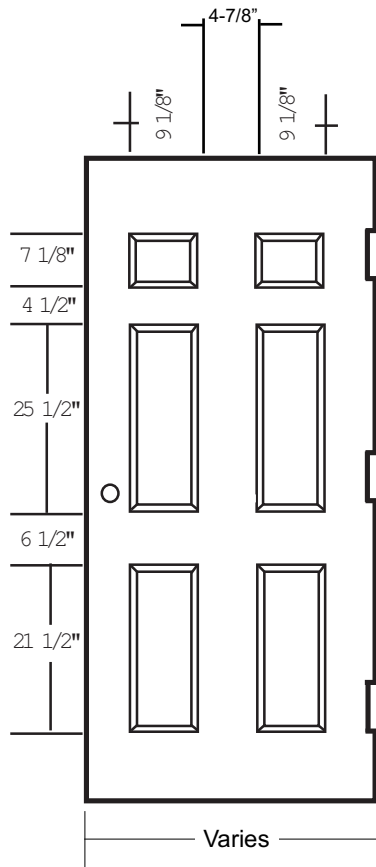
Label Range - Consult Label Section for Fire Ratings.

Edge Seam Construction - Visible seam is standard. (Optional - Continuously welded seamless or intermittently welded seamless available) (Not available in 20 gage)

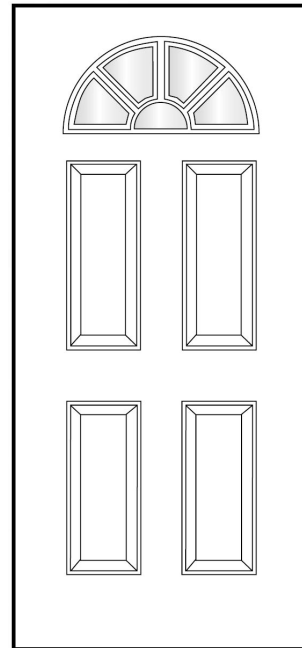
Universal Standard/Heavy Weight Hinge - Hinge fillers used to change from heavy weight to standard weight hinge prep.

Handing Design - Non-Handed standard (Handed optional)

Revised 9/14

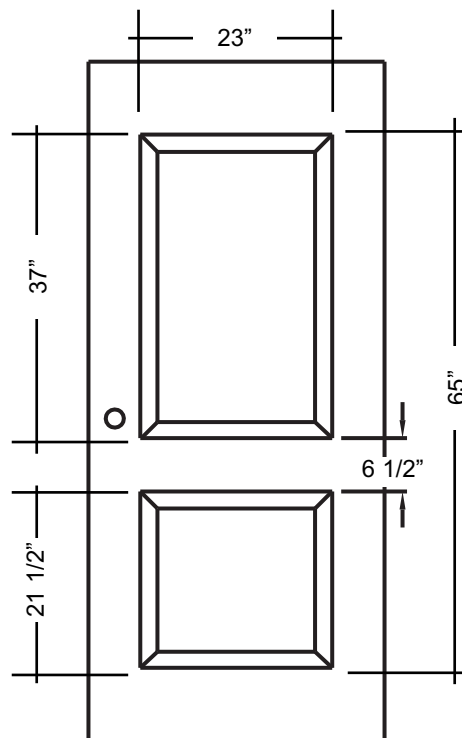
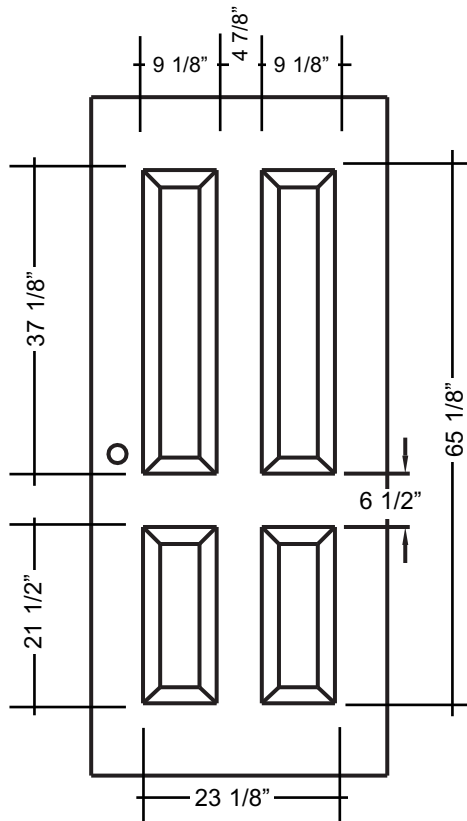


Crossbuck



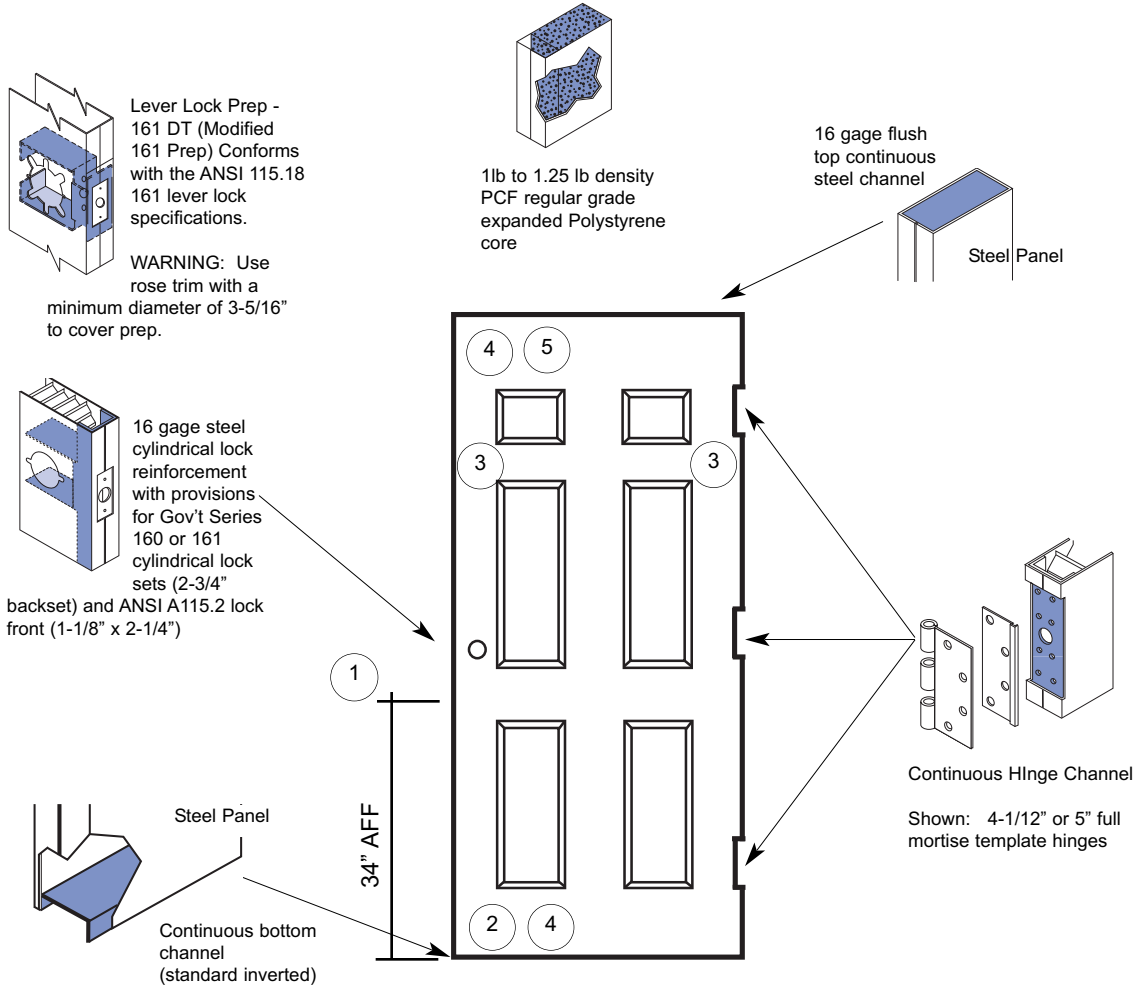
Sunburst
(Includes Glass)

NOTE: Maximum lock trim diameter is 3-1/8" on 2'8" doors.



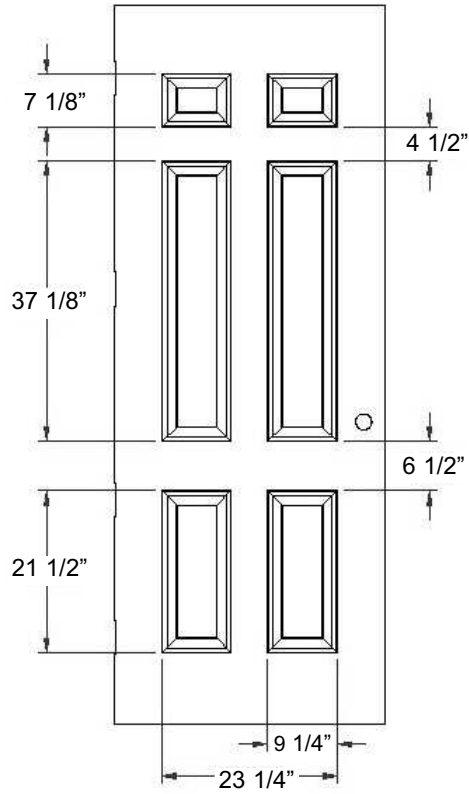
EMBOSED DOORS - DOOR CONSTRUCTION DETAILS

TECHNICAL DATA SHEET No. 104a

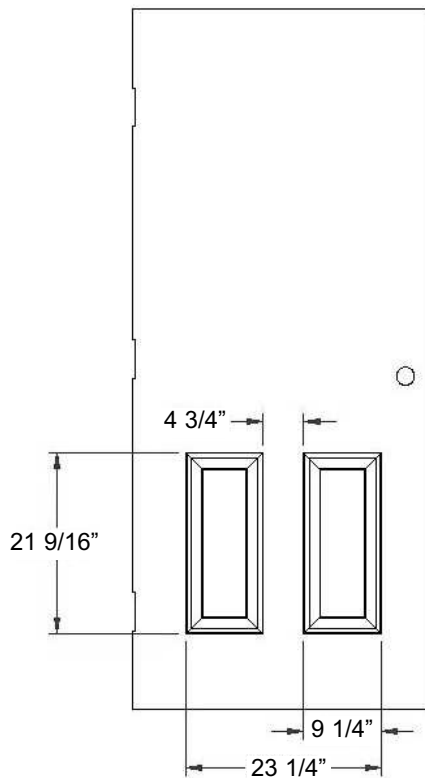
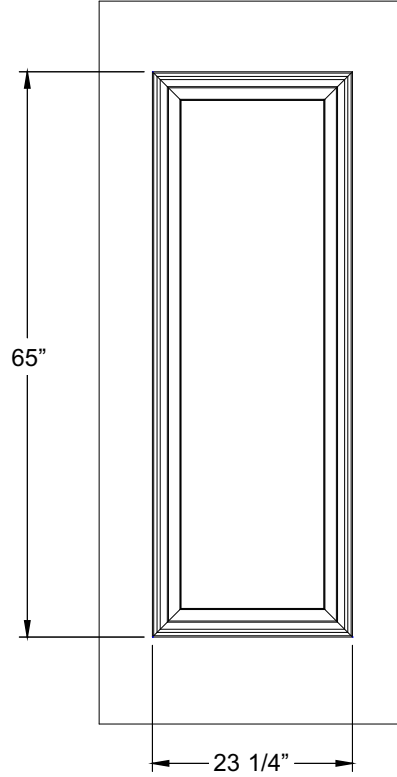


1. Doors smaller than 2'8" width - lock height moved to 34" AFF (not ADA compliant)
2. ADA compliance or 10" mop/kick plate requires a full 10" bottom rail
3. Minimum hinge and/or lock rail 3-1/8"
4. Minimum top and/or bottom rail 3-7/8"
5. Minimum top rail with standard RBP closer reinforcement 6-1/4"

Revised 9/14



8'0" 6 Panel
Elongated Panels



PB2 (as shown)
*If Cutout or Kit must specify

